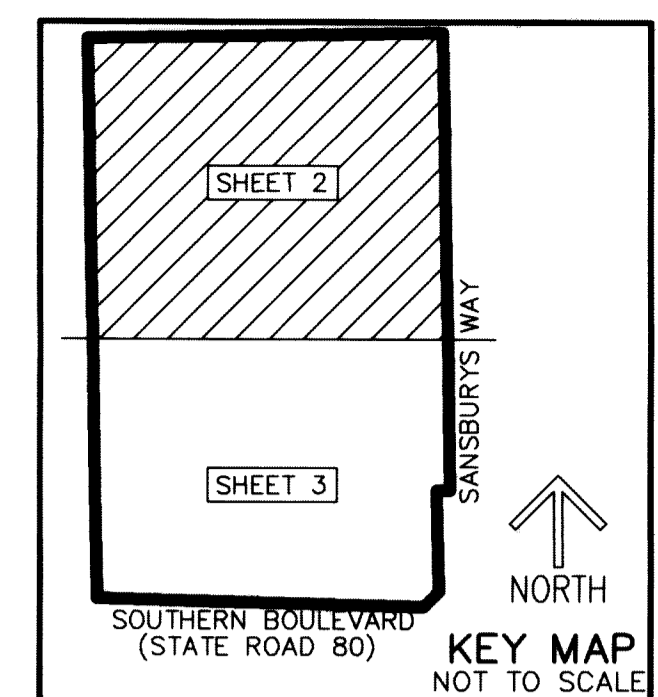


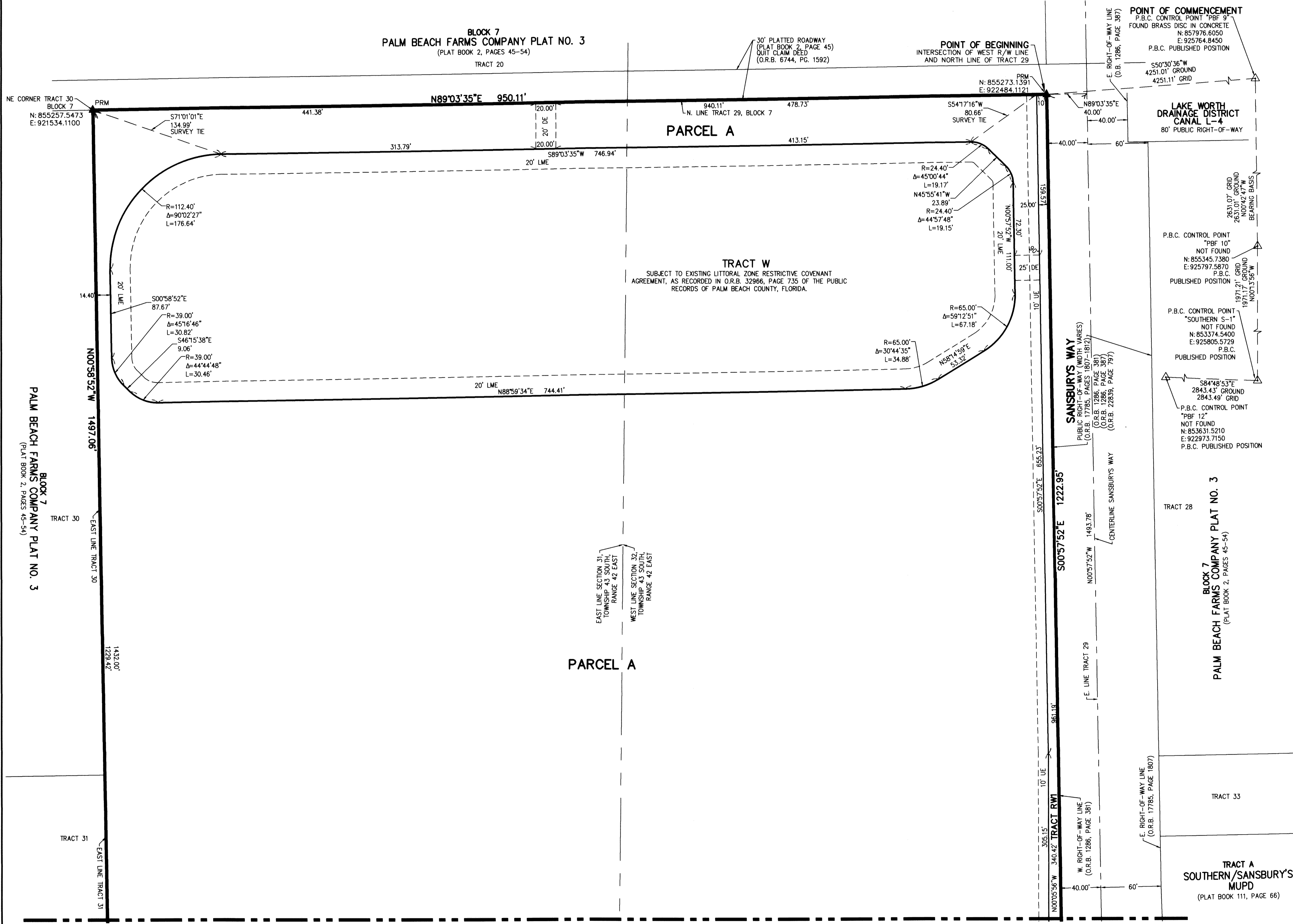
RANGER AT SANSBURYS WAY MUPD

BEING A REPLAT OF PORTIONS OF TRACTS 29, 32 AND 41 AND THAT 30' RIGHT-OF-WAY LYING BETWEEN TRACTS 32 AND 41, BLOCK 7, PALM BEACH FARMS CO. PLAT NO. 3, AS RECORDED IN PLAT BOOK 2, PAGES 45 THROUGH 54 OF THE PUBLIC RECORDS OF PALM BEACH COUNTY, FLORIDA, LYING IN SECTIONS 31 AND 32, TOWNSHIP 43 SOUTH, RANGE 42 EAST, PALM BEACH COUNTY, FLORIDA

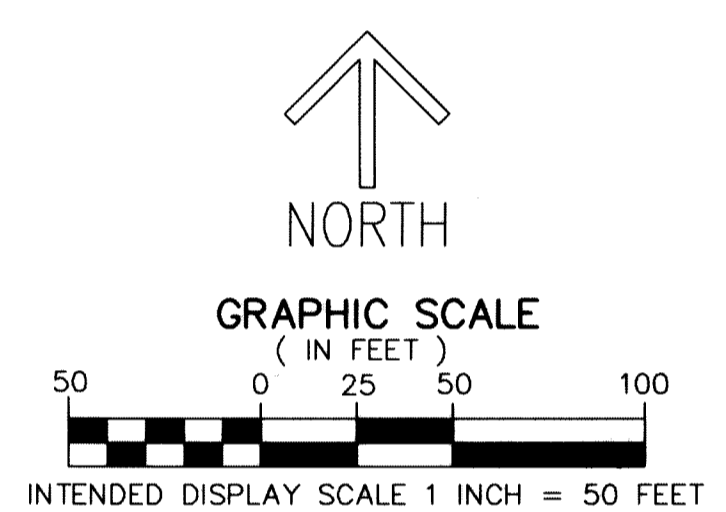


195

SHEET 2 OF 3



THIS INSTRUMENT PREPARED BY
 DAVID P. LINDLEY
 OF
CAULFIELD & WHEELER, INC.
 SURVEYORS - ENGINEERS - PLANNERS
 7900 GLADES ROAD, SUITE 100
 BOCA RATON, FLORIDA 33434 - (561)392-1991
 CERTIFICATE OF AUTHORIZATION NO. LB3591



- LEGEND/ABBREVIATIONS**
- ⊕ - CENTERLINE
 - Δ - DELTA (CENTRAL ANGLE)
 - CB - CHORD BEARING
 - CD - CHORD DISTANCE
 - DE - DRAINAGE EASEMENT
 - E - EASTING (WHEN USED WITH COORDINATES)
 - F.D.O.T. - FLORIDA DEPARTMENT OF TRANSPORTATION
 - L - ARC LENGTH
 - LB - LICENSED BUSINESS
 - LME - LAKE MAINTENANCE EASEMENT
 - MUPD - MULTIPLE USE PLANNED DEVELOPMENT
 - N - NORTHING (WHEN USED WITH COORDINATES)
 - O.R.B. - OFFICIAL RECORD BOOK
 - P.B.C. - PALM BEACH COUNTY
 - PBCUE - PALM BEACH COUNTY UTILITY EASEMENT
 - R - RADIUS
 - R/W - RIGHT-OF-WAY
 - S.F.W.M.D. - SOUTH FLORIDA WATER MANAGEMENT DISTRICT
 - UE - UTILITY EASEMENT
 - PRM - DENOTES PERMANENT REFERENCE MONUMENT SET 4" x 4" x 24" CONCRETE MONUMENT WITH ALUMINUM DISK STAMPED "C&W PRM LB3591"
 - ▲ - DENOTES HORIZONTAL CONTROL POINT
 - ▲ - DENOTES SET PERMANENT REFERENCE MONUMENT NAIL AND DISC STAMPED "PRM" LB 3591

NOTES
COORDINATES, BEARINGS AND DISTANCES
 COORDINATES SHOWN ARE GRID
 DATUM = NAD 83 (90 ADJUSTMENT)
 ZONE = FLORIDA EAST
 LINEAR UNIT = US SURVEY FEET
 COORDINATE SYSTEM 1983 STATE PLANE
 TRANSVERSE MERCATOR PROJECTION
 ALL DISTANCES ARE GROUND, UNLESS OTHERWISE NOTED
 SCALE FACTOR = 1.000022794
 GROUND DISTANCE X SCALE FACTOR = GRID DISTANCE
 BEARINGS AS SHOWN HEREON ARE GRID DATUM
 NAD 83 (90 ADJUSTMENT), FLORIDA EAST ZONE.

MATCH LINE SHEET 3